

CANBERRA • SOUTH COAST • SYDNEY • BATHURST • SNOWY MOUNTAINS

Hopkinsons

...MORE THAN 'Just another Coach Company'

Travelways

A U S T R A L I A
PROFESSIONAL STUDENT LEARNING EXPERIENCE COORDINATORS

HOPKINSONS TRAVELWAYS

STUDENT LEARNING EXPERIENCES PLANNER



ACCOMMODATION **BOOKING,** EDUCATIONAL **ACTIVITIES & ITINERARY** PLANNING **FOR YOUR** **SCHOOL EXCURSIONS**

WWW.TRAVELWAYS AUSTRALIA.COM.AU



CONTENTS

Introduction	3
CANBERRA AND THE CAPITAL REGION	6
PACER Guidelines and Application Form	8
1 Day Itinerary	13
2 Day Itinerary	15
3 Day Itinerary	17
THE SNOWY MOUNTAINS	22
3 Day Itinerary	23
CENTRAL WEST	26
2 Day Itinerary	27
BATHURST GOLDFIELDS	29
2 Day Itinerary	30
3 Day Itinerary	32
NORTH COAST	33
SOUTH COAST	34
1 Day Itinerary	34
3 Day Itinerary	35
DISCOVER SYDNEY	36
3 Day Itinerary	37
Quotation Request Forms	38

CONTACT US:

CALL US ON (02) 9632 5200

FAX TO (02) 9632 4477

OR ALTERNATIVELY, EMAIL TO

info@travelwaysaustralia.com.au

www.travelwaysaustralia.com.au

Kiama Coaches Trading as
Hopkinsons Travelways
A.B.N 45 062 787 571
125 Woodpark Road, Smithfield NSW 2164
P.O Box 12 Merrylands NSW 2160

MORE THAN JUST BUS TRIPS

We are pleased to present you with our Student Learning Experiences Planner, your essential guide to excursion planning.

Travelways provides a service to Primary and Secondary schools throughout Australia. We specialise in assisting School Groups and Teachers with their excursion planning.

Our aim is to provide students with a fun educational learning experience. Taking students on an excursion with Travelways can be a pleasant and enjoyable experience with the assistance from the Travelways team.

Travelways conducted its first one-day excursion in 1962. Some schools have chosen Travelways as their preferred excursion coordinators for more than 25 years. During this time, we have received numerous letters from schools complimenting the quality and value of our service and their experience.

The Travelways team has extensive knowledge of tourism in Australia specialising in the Snowy Mountains, Bathurst, Hill End, Canberra, the Blue Mountains and the South Coast Old Mogo Town.

We have arrangements with numerous hotel/motel, budget accommodation, cabins and caravan parks and we know with whom to talk and how to prepare your itinerary according to your needs.



To make a booking:

1

CALL

Call or fax us with the following information:

- ▶ Destinations and attractions
- ▶ Preferred accommodation
- ▶ Proposed departure and return dates
- ▶ Student year and number of students/teachers travelling.

2

QUOTE

We will forward you a written quote.

3

QUOTATION ACCEPTANCE

Sign and return the quotation form.

4

BOOK

On receiving the signed quotation form, your accommodation, itinerary & Coach will be booked. We will forward you a copy of the final documents as soon as confirmed.

5

DEPOSIT

A deposit invoice will be issued to secure your booking.

6

PAY

A tax invoice will be forwarded to you and full payment will be required within 14 days from the tax invoice date.



MORE THAN 'JUST ANOTHER COACH COMPANY'

CONTACT US:

CALL US ON (02) 9632 3344

FAX TO (02) 9632 4402

OR ALTERNATIVELY, EMAIL TO

quotes@hopkinsons.com.au

www.hopkinsons.com.au

Kiama Coaches Trading as Hopkinsons

The Hopkinsons modern bus and coach fleet ranges in size to suit your charter requirements.

All vehicles are monitored via two way radio communication and GPS tracking. Operations staff monitor all movements to guarantee our customer satisfaction.

Every day we transport many schools in style, luxury and safety. We are the leading provider of all forms of school transfers, charters and tours. Hopkinsons coaches are available for:

- ▶ day charters,
- ▶ school camp transfers,
- ▶ local sports transfers,
- ▶ interstate tours and
- ▶ educational tours.



A family
owned
Australian
business





AVAILABLE VEHICLES INCLUDE:

19–54 seat coaches



- Seatbelt equipped
- Reverse cycle air conditioning
- PA system
- AM/FM radio
- Tinted windows with curtains



Wheelchair accessible available

- Entertainment package including TV, DVD and CD player
- Restrooms available on request

66–71 seat coaches



- Seatbelt equipped
- Reverse cycle air conditioning
- PA system
- AM/FM radio
- Tinted windows with curtains



No wheelchair accessible options

- Entertainment package including TV, DVD and CD player
- Restrooms available on request

45–50 seat buses



- Reverse cycle air conditioning
- PA system
- AM/FM radio
- Cloth high back bench seats



Wheelchair accessible available

11 seat mini buses



- Seatbelt equipped
- Reverse cycle air conditioning
- AM/FM radio
- TV/DVD player

Luggage Trailers



Hopkinson's can provide extra luggage capacity on request.



1 DAY EXPERIENCE

A visit to our Nation's Capital allows you to gain a valuable educational experience of our Government and our Nation's history.

Departs school: 6.00am

Returns: approx. 8.00pm.

Choose 2 – 3 of the venues listed on page 7.

2 DAY EXPERIENCE

The 2-day Canberra Adventure allows you to take advantage of Canberra's many attractions. Experience our Government and our Nation's history.

CANBERRA AND THE CAPITAL REGION

CANBERRA, ACT

A visit to your Nation's Capital allows pupils to gain a valuable educational experience of our Government and our Nation's history.

In this uniquely fully planned city, students are involved in a range of educational programs focused on Australian history, civics and citizenship, science, art and culture.

A close up view of the Federal parliamentary system exposes students to the features of Australian democracy and their rights and responsibilities as an Australian citizen.



VENUE SELECTION

- 1 Australian Institute of Sport
- 2 Australian National Botanic Gardens
- 3 Australian Science Festival
- 4 ANZAC Parade Memorials
- 5 Australian War Memorial
- 6 Canberra Deep Space Communication Complex
- 7 Canberra Glassworks
- 8 Canberra International Sports & Aquatic Centre
- 9 Canberra Railway Museum
- 10 Canberra Reptile Zoo
- 11 Cockington Green
- 12 CSIRO Discovery Centre
- 13 Electoral Education Centre
- 14 Geoscience Australia
- 15 Government House
- 16 High Court of Australia
- 17 Indonesian Embassy
- 18 iPlay Australia
- 19 Mount Ainslie
- 20 Mr Spokes Bike Hire
- 21 Zone 3 Laser Games
- 21 Museum of Australian Democracy
- 22 National Aquarium and Wildlife Park
- 23 National Archives of Australia
- 24 National Art Gallery
- 25 National Capital Exhibition
- 26 National Dinosaur Museum
- 27 National Film & Sound Archives

- 28 National Library of Australia
- 29 National Museum of Australia
- 30 National Portrait Gallery
- 31 Parliament House
- 32 Parliamentary Education Office
- 33 Phillip Ice Skating Centre
- 34 Questacon - National Science and Technology Centre
- 35 Royal Australian Mint
- 36 Southern Cross Cruises
- 37 Telstra Tower, Black Mountain
- 38 Tidbinbilla Nature Reserve

ACCOMMODATION SELECTION

- 1 Alivio Tourist Park
- 2 Australian Institute of Sport
- 3 Best Western Sundowner Village
- 4 Birrigai at Tidbinbilla
- 5 Bush Capital Lodge
- 6 Camp Cottermouth
- 7 Canberra Carotel
- 8 Canberra City YHA
- 9 Capital Country Holiday Village
- 10 Eagle Hawk Holiday Park
- 11 Gold Creek Tourist Resort
- 12 Greenhills Camp and Conference Centre
- 13 Ibis Styles Eagle Hawk
- 14 International Airport Motel
- 15 Warrambui Retreat

PACER Guidelines

Objective

The PACER program encourages students' onsite learning about national democratic, historical and cultural institutions. The program will benefit students living further than 150 kilometres from Canberra.

Funding

The program operates as a rebate which is paid direct to schools after they have met the eligibility requirements for funding. This payment is GST free. The payment is a subsidy and is not meant to cover all costs.

Distances are calculated by road to Canberra using the most favourable travelling routes which are not necessarily the shortest. The website www.wheris.com.au will be used to determine this.

Funds are allocated on a per student basis at rates varying according to distance travelled. The distance criteria (zones) are as follows:

Distance from Canberra	Funds allocated per student
150–499 kilometres	\$20
500–999 kilometres	\$30
1,000–1,499 kilometres	\$60
1,500–1,999 kilometres	\$60
2,000–2,499 kilometres	\$120
2,500–2,999 kilometres*	\$150
3,000–3,999 kilometres	\$240
4,000 kilometres and over	\$260

*Includes all students from Tasmania because of additional air/sea travel expenses.

Funds should be used to reduce the costs for individual students. **Schools are encouraged to apply early as applications for funding will be dealt with in order of receipt. As there is a limited amount of funding, teachers are encouraged to apply as early as possible. Each application will be dealt with in order of receipt until funds are exhausted. At this point a waiting list will be created in the case of cancellations.**

Eligibility

To be eligible for the subsidy, students must be enrolled with a recognised education provider (generally a school) 150 km or more away from the Canberra GPO and be part of a school excursion group whose principal purpose for travelling to Canberra is to enhance student learning in civics and citizenship education.

School groups whose principal purpose for visiting the National Capital is to engage in sporting or social activities are NOT eligible for funding.

A student is only eligible for the subsidy once per calendar year and the onus is on the school to ensure that each student for whom the funding is claimed has not, to the best of the school's knowledge, received the subsidy previously. Teachers or other adults accompanying the students are not eligible for a rebate. Funding will be available to students in years 4-12 only.

Teachers will need to submit an application at least three weeks prior to the excursion. To be eligible for the subsidy, prior approval must be obtained*.

On approval of your application, teachers will be provided with appropriate paperwork to complete.

Requirements

Unless otherwise agreed by the Department, students are required to visit:

- Parliament House (including taking a guided educational tour, and wherever possible, participating in a Parliamentary Education Office Program and meeting their local Member/Senator);
- Old Parliament House (OPH) (including undertaking an educational program at the Museum of Australian Democracy at Old Parliament House and/or the National Electoral Educational Centre);
- The Australian War Memorial; and
- Other national civic institutions where possible (bookings must be made at the above venues before submitting an application).

Teachers must ensure:

- Funding provided and activities undertaken are reported in your school newsletter or equivalent (sample letter available);
- Use of current Civics and Citizenship education resources in preparation for the visit;
- Civics and Citizenship unit/course outlines or equivalent are provided;
- The paperwork provided on approval of PACER application is completed and returned within six (6) weeks after the excursion.

*Schools which have late applications rejected may seek a review by the Department

Application Form

The Parliament and Civics Education Rebate (PACER) Program provides a travel subsidy for Year 4-12 students across Australia to visit Parliament House, Old Parliament House and the Australian War Memorial and other national institutions as part of their civics and citizenship education.

- Teachers should read the guidelines on the reverse of this application form carefully before completing the form.
- One form is to be completed per school if more than one school is involved in a travel group.
- To calculate distances please use www.whereis.com.au

A COPY OF THE EXCURSION ITINERARY WITH CONFIRMED BOOKING TIMES MUST BE ATTACHED TO THIS FORM.

Name of School: _____

Postal address: _____

City: _____ State: _____ Postcode: _____

Phone: _____ Facsimile: _____

Contact person: _____ Teacher in charge of tour: _____

Email (contact person): _____

School email: _____

Distance from your school to Canberra (by road using www.whereis.com.au): _____ km

Coach/bus/airline company: _____

Date of visit to Canberra Arrive: _____ Depart: _____

Number of eligible students on excursion: _____ Number of adults accompanying excursion: _____

Please enter the number of students in each year level travelling to Canberra:

Year 4: _____ Year 5: _____ Year 6: _____ Year 7: _____ Year 8: _____

Year 9: _____ Year 10: _____ Year 11: _____ Year 12: _____

How/where did you hear about the rebate? _____

IMPORTANT: I have read and understand the PACER Guidelines.

[Submit Form](#)

The Parliament and Civics Education Rebate is supported by the Australian Government.

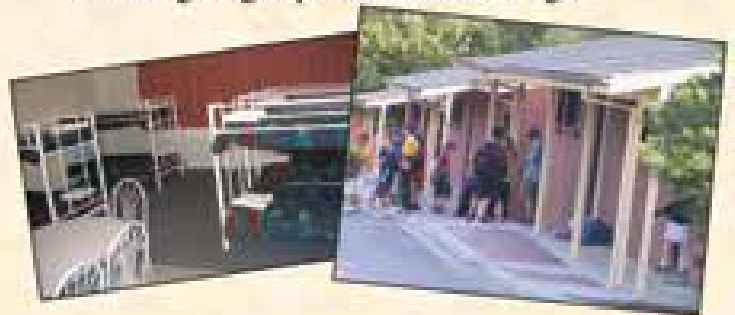
Privacy Notice: Information on this Form is collected in order to be used by BUSY At Work in relation to administering the PACER program. Information on this form may also be provided to the Department. Any personal information contained in this form will be used only for the purpose of administering the PACER program, and will not otherwise be disclosed without your consent unless where authorised or required by law.

Pt: 1300 368 248 | Fax: 07 5585 4494 | Email: pacer@busyatwork.com.au | www.pacer.org.au | PO Box 1465, Southport BC QLD 4215



Set on approx. 18 acres, and centrally located in the suburb of Watson, the Canberra Carotel makes the perfect base to enjoy the many attractions Canberra and the surrounding areas have to offer. Packages are arranged to suit the individual group requirements.

- All rooms have en-suites with towels and linen provided.
- Students multi share accommodation with Teachers twin share.
- Catering for groups both small and large.



- Coach Captains, free of charge. (FOC)
- Teachers FOC ratio is 1:15
- Dining Hall has the capacity to seat up to 330 people.
- Dinner, breakfast and a packed lunch are provided as part of the standard package.
- Mainstream dietary requirements are catered for at no extra cost.
- After Hours Caretaker.
- Multi-Function room available to hire.
- Ample coach parking on a sealed surface.

Our dedicated experienced staff aim to assist you and your group in having a most enjoyable stay while visiting Canberra.



Canberra Carotel
Cnr of Aspinall & Zelling St. Watson ACT 2602
P: 02 6241 1377 F: 02 6241 6674
E: groups@carotel.com.au
W: www.carotel.com.au



ibis Styles Canberra Eaglehawk

your place your space

Surrounded by large open spaces and tranquil bushland, ibis Styles Canberra Eaglehawk is the perfect place to base your next educational excursion. Our team like to make things fun and accommodating for all of our guests. We look forward to seeing you soon!

www.ibiscanberra.com.au



Accommodation for 300+ students and teachers



Hot buffet breakfast & dinner
Daily packed lunch supplied
Caters to all dietary requirements



For every 20 students, 1 teacher, stays free of charge



Dedicated meal and recreational rooms



All rooms include linen and ensuite bathroom



All coach captains stay and eat for free



ibis Styles Eaglehawk
1224 Federal Highway, Sutton
North ACT/NSW Border 2620

BOOK NOW

groups@ibisstyleseaglehawk.com.au | 02 6241 6033

EXPERIENCE DEMOCRACY IN ACTION AT THE

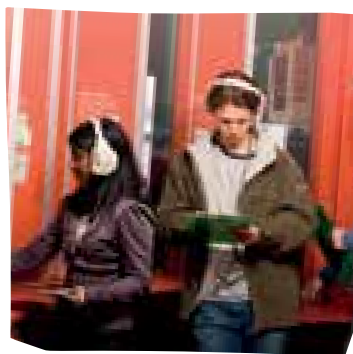
National Electoral Education Centre

“Made the curriculum come to life.”

Teacher, Good Shepherd Lutheran College, QLD

“Very interactive, hands on and informative session.”

Teacher, Deniliquin South Public School, NSW



The experience

A 90 minute experiential learning program, including:

- Multi-media exploring the history of Australian democracy
- Hands-on activities about voting
- Going behind the scenes in your very own election.

The curriculum

- Linked to the Australian Curriculum Humanities and Social Sciences – Civics and Citizenship
- Tailored to a range of year levels including senior students of Australian history, politics and legal studies.

Bookings

Bookings are essential and group sizes are strictly limited.

Phone 1800 020 067

Teacher resources

Complement your visit with our Get Voting resource pack to run elections at school.

Visit the AEC for Schools website to find out more.

FREE ENTRY

Ideally located in the Senate wing of Old Parliament House, the National Electoral Education Centre is a fun and interactive way to discover Australia's electoral system.



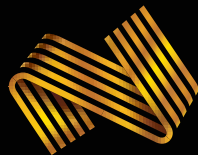
1 DAY CANBERRA ITINERARY

ITINERARY	DAY ONE
5.45am	Coach arrives at school.
6.00am	Depart school for Canberra . Midway comfort break (at own expense).
10.00am	Electoral Education Centre Three part program – 1) The Theatre 'Democracy the Australian way' 2) The Dead Zone 'Discovering Electoral Activities Zone' 3) The Polling Place Lunch – Students and teachers to provide their own packed lunch.
12.30pm	Australian War Memorial A visit to the War Memorial offers students many ways to come to understand and empathise with Australians who served and died during war. The galleries cover every major war in which Australians have been involved.
2.00pm	Parliament House 2.00pm – House of Representatives and the Senate 3.00pm – Parliamentary Education Office
4.15pm	Depart Canberra for return journey to school. Midway comfort break – at own expense.
8.00pm	Approximate arrival at school.

TOURS INCLUDE:

- ▶ luxury seatbelt equipped coach travel
- ▶ entrance and attraction fees *(where possible)*
- ▶ accommodation of your choice
- ▶ meals (excludes breakfast and lunch on the first day and dinner on the last day)
- ▶ teachers travel free

Experience



AIS

Australia's premier elite sporting precinct. Only minutes from Canberra's CBD and set among 65 hectares of campus-like grounds. Our specialist school group consultants can develop a tailored camp program.



AIS Athletes Village

The **AIS Athletes Village** is perfect for groups of all sizes, with capacity for up to 250 guests.

Nutritious meals are included in all on-site stays and served in the **AIS Dining Hall**, alongside visiting athletes.

AIS Athletes Village security is controlled with swipe cards. Teachers and group leaders are provided with access cards for all group members.

AIS Tour is included with all school group accommodation stays.

Other facilities at the AIS

- Free off-street parking for vehicles and buses and monitored by security guards and CCTV 24/7.
- A games room in the AIS Athletes Village offers video games, pool table, table tennis and more.
- Studio One is a large space in the AIS Athletes Village suitable for activity nights and group gatherings.
- AIS Theatre or AIS Visitor Centre Theatre are available to hire for movie and special nights.

AIS Tours

Go behind the scenes on an award-winning 90 minute **AIS Tour** where you might catch some of Australia's top athletes in training. Challenge yourself in **Sportex**, one of Australia's leading interactive sports exhibits, set amongst a unique collection of Australian sporting memorabilia. Best of all, **Sportex** is included as part of every **AIS Tour**.

The **AIS Tour** is one of only a very few evening attractions available to school groups visiting Canberra. Group tours run daily at 8.30am, 10am, 11.30am, 1pm, 2.30pm, 4pm, and weekdays at 5.30pm and 7.30pm. Tour costs apply.

AIS Sports Experience

Visiting school children may wish to participate in **Sports Experience**, a 90-minute programme which teaches up to three sports and on the AIS's famous sporting fields and facilities. School groups can also book the **AIS Aquatic and Fitness Centre** in the evenings for kids to enjoy a fun night-time activity. Charges apply.



Leverrier Street, Canberra, ACT

Phone: (02) 6214 1010 Email: aistours@ausport.gov.au

ExperienceAIS.com

[f](#) /ExperienceAIS [t](#) @ExperienceAIS



2 DAY CANBERRA ITINERARY

ITINERARY	DAY ONE
6.00am	Depart school for Canberra. Mid way comfort break (at own expense).
10.30am	Arrive Canberra
10.30am	Parliament House Guided tour of Parliament House and Parliamentary Education Office. Parliament House Hospitality; morning tea with your local Federal Member if your member is present and available.
1.00pm	Lunch - Students supply their own packed lunch.
2.00pm	Australian War Memorial The best way for students to experience the Memorial is by doing an education program. Many of the programs are 'hands-on' giving students the opportunity to see, touch and discuss items to which the rest of the public do not have access. Sessions last one hour and are presented in the galleries by experienced Memorial staff. <i>(1½ hour duration)</i> .
4.00pm	Cockington Green A look at the world in miniature. A visit to Cockington Green is an educational, relaxing and fun part of your itinerary. The new international display area represents the growing multicultural society of today.
5.30pm	Overnight accommodation.
6.00pm	Dinner.
7.00pm	Depart for Evening Activities.
7.30pm	National Dinosaur Museum Walk among the dinosaurs and unearth the mysteries of the earth's prehistoric past at the National Dinosaur Museum. The many exhibits provide a fun and stimulating learning environment.

ITINERARY	DAY TWO
7.00am	Breakfast.
8.00am	Depart accommodation.
8.30am	Electoral Education Centre Education Sessions are aimed at educating participants about the Federal electoral process and encouraging active participation in our representative democracy <i>(1½ hour duration)</i> .
11.00am	Questacon Spend two hours exploring Questacon's six galleries where they make science fun and interesting for everyone <i>(2 hour duration)</i> .
1.00pm	Lunch - Packed lunch supplied by accommodation venue.
2.00pm	Australian Institute of Sport Tour the Australian Institute with an elite athlete, bump into sporting heroes jogging through the AIS, catch a glimpse of up and coming gymnasts and swimmers, view world class facilities and test your skills in Sportex, the interactive exhibit <i>(1½ hr duration)</i> .
3.30pm	Depart Canberra. Mid way comfort break (at own expense).
7.30pm	Approximate arrival at school.



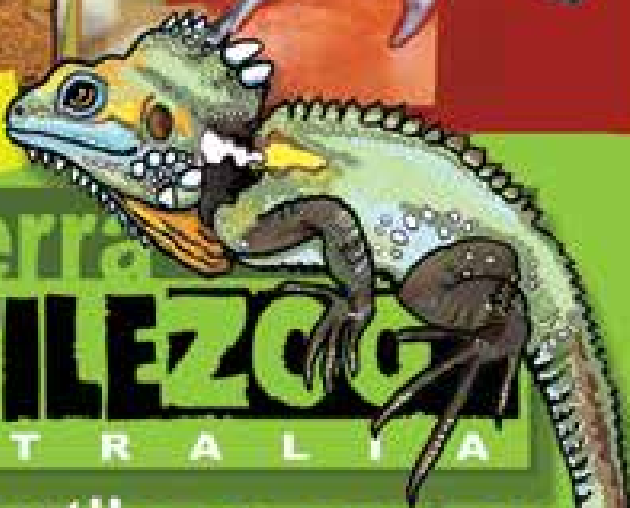
**LOOK AT OVER 60 OF AUSTRALIA'S
UNIQUE REPTILES UNDER ONE ROOF**



OVER 50 NEW NATURAL HABITATS now display Australia's Venomous snakes, crocodiles, dragons goannas, frogs, and more! With our experienced and enthusiastic keepers always on hand students and adults are encouraged to touch and interact with our range of spectacular hand reared native animals in a personal, comfortable safe and educational environment!!



NEW



Canberra Reptile Zoo
OPEN 9am till 9pm 7 days for
booked tours and shows.
Open 10am to 5pm 7 days for
general admission.
GOLD CREEK VILLAGE
9 O'Hanlon pl NICHOLLS ACT
Phone: 02 6253 8533
Email: info@canberrareptilezoo.com.au

Canberra
REPTILEZOO
A U S T R A L I A

 Find us on:
facebook.

www.canberrareptilezoo.com.au

3 DAY CANBERRA ITINERARY

ITINERARY	DAY ONE
6.00am	Coach to depart school. Midway comfort stop.
10.30am	Electoral Education Centre Three part program – 1) The Theatre 'Democracy the Australian way' 2) The Dead Zone 'Discovering Electoral Activities Zone' 3) The Polling Place
12.00am	Lunch – Students and teachers to provide own packed lunch.
1.30pm	National Museum of Australia The National Museum of Australia is devoted to telling stories of Australia and Australians. Through state-of-the-art technology and hands-on interactive exhibitions, the museum explores the key issues, events, and people that have shaped our Nation.
3.00pm	High Court of Australia The highest court in the Australian court system. It interprets and applies the laws of Australia. Decisions of the High Court are binding on all other courts throughout Australia.
4.30pm	Black Mountain Tower (previously known as Telstra Tower) Black Mountain Tower rises 195 metres above the summit of Black Mountain and provides a 360 degree view of Canberra. Learn about history of telecommunication in Australia from the earliest days to the 21st century with 'hands-on' experience when exploring the 'Making Connections' exhibit.
6.00pm	Arrive overnight accommodation centre.
6.30pm	Dinner.
7.30pm	Activities Room for school's own activities.

ITINERARY	DAY TWO
7.00am	Breakfast.
8.00am	Depart accommodation centre.
9.00am	Parliament House 9.00 – House of Representatives & Senate 10.00 – Parliamentary Education Office 11.00 – Hospitality
12.00am	Australian War Memorial - A visit to the War Memorial offers students many ways to come to understand and empathise with Australians who served and died during war. The galleries cover every major war in which Australians have been involved. Lunch – packed lunch provided by Accommodation Centre.
2.30pm	Canberra Reptile Zoo Come face to face with the world's most venomous snakes as well as some of the cutest reptiles you will see! Get to know Australia's many cold blooded animals, including geckos, lace monitors, crocs, blue tongue lizards and a heap more!
5.00pm	Arrive accommodation centre.
5.30pm	Dinner.
6.00pm	Depart for evening activity.
7.00pm	Questacon. Experience first hand exciting 'hands on' science exhibits.

ITINERARY	DAY THREE
6.30am	Breakfast.
7.30am	Depart accommodation.
8.30am	Australian Institute of Sport See where the fittest bodies in Australia train at the Australian Institute of Sport. Experience the life of an elite athlete as you tour the international standard sports facility and students can test their skills at the interactive sports exhibition.
10.30am	Royal Australian Mint Visit the Royal Australian Mint to learn the stories behind every coin in your pocket, purse or piggy bank. Meet the people and robots who work behind the scenes. Make your own collectable \$1 coin as a souvenir. Lunch – packed lunch provided by accommodation centre.
12.30pm	Depart Canberra for return journey to school. Midway comfort break – McDonalds - own expense.
5.00pm	Approximate arrival at school.



THE NATIONAL DINOSAUR MUSEUM

AUSTRALIA'S LARGEST DISPLAY OF DINOSAURS

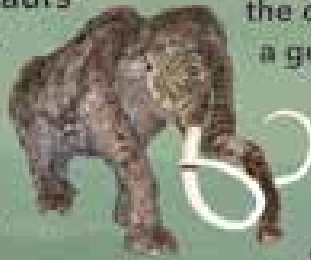
OPEN FOR SCHOOL TOURS 7 DAYS 10 AM - 10 PM

STEP BACK IN TIME THROUGH THE 165 MILLION YEARS
THAT THE DINOSAURS RULED THE PLANET

One of Canberra's premier tourist attractions, Australia's National Dinosaur Museum now contains more than 50 skeleton and skull displays, over 50 lifelike dinosaur models, as well as 12 animatronic dinosaurs which move, roar, bite, blink, and even breathe.

Students embark on a journey through millions of years as they learn how the dinosaurs evolved, thrived, and eventually perished. Our experienced guides start with the earliest dinosaurs and progress through the different eras, discussing Australian dinosaurs and the ice age, and then finish with more recent megafauna.

Tours are tailored to suit all ages of primary and secondary students, and bring a unique insight into dinosaur biology and evolution in a fun filled, interactive experience. Tours are available both day and night, with night tours being most popular as they offer a more private and exclusive experience - taking place after the museum is closed to the public. Under the cover of darkness, the dinosaurs take



on a dynamic presence when exhibits are illuminated for individual discussion as the tour progresses through the displays. Please book early for night tours.

During their experience, students have the opportunity to place their hands on a genuine 150 million year old dinosaur bone, touch a real 150kg meteorite or hold a piece of 100 million year fossilised dinosaur dung. Photographs are welcome at the end of the discussion in each section.

Our massive new Stegodon is an experience all on its own. At 4 metres high and 7.5 metres long, this ancestor to the smaller mammoth is a sight to behold. Another recent addition is a 2 metre high jaw of the megalodon shark - the largest shark to have ever lived, and which fed on whales.

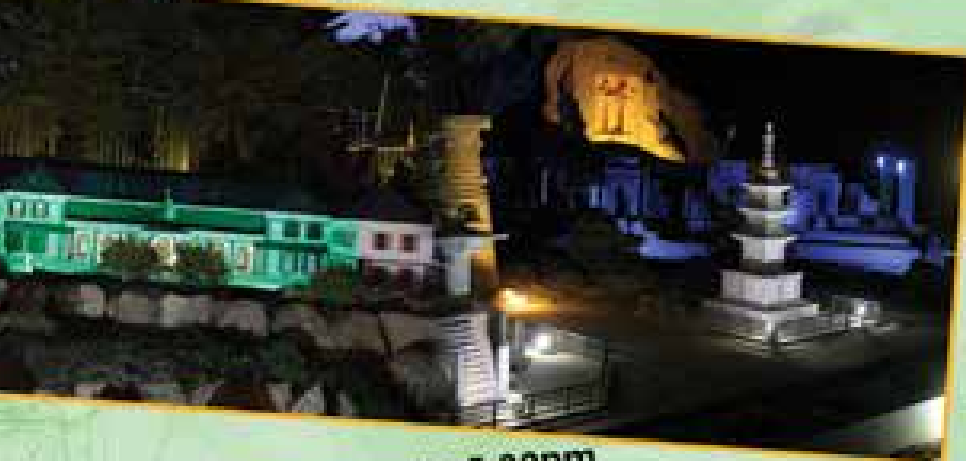
Each program runs for a total duration of 90 minutes with a 60 minute guided tour, then 30 minutes to experience our interactive areas or to browse through Canberra's largest display of fossils, minerals and natural crystals as well as a comprehensive and diverse range of science and dinosaur themed souvenirs.

For more information or bookings
P: 02 6230 2655
E: bookings@nationaldinosaurmuseum.com.

Gold Creek Road & Barton Highway
Nicholls ACT 2913
www.nationaldinosaurmuseum.com.au

Cockington Green Queensland Gardens

Display of Miniature Buildings
and Gardens from around the world!



Night Time Openings!

- See the Village Illuminations
- From 6.30pm
- Minimum of 40
- Steam Train Ride Included
- Bookings Essential

School Discovery Sheet

- Provided FOC for each Student
- Pre-Order Essential

Open 7 days 9.30am - 5.00pm

Last Admission 4.15pm

Closed Christmas and Boxing Day

Free Call: 1800 627 273

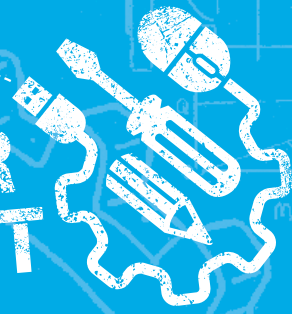
info@cockingtongreen.com.au - www.cockingtongreen.com.au



 /cockingtongreen
 @cockingtontrain

Questacon

MAKER
PROJECT



Questacon Smart Skills Initiative

WORKSHOPS



THE QUESTACON MAKER PROJECT

The *Questacon Maker Project* offers interactive workshops and activities developed especially for school students to engage them in ideas, tools and creativity.

These free two-hour workshops, delivered at The Ian Potter Foundation Technology Learning Centre in Deakin, engage students in years 6–12 with technology through interactive learning experiences delivered within our specialised Maker Space.

Questacon's presenters provide an engaging exploration of high-tech gadgets and low-tech materials in an environment where groups can participate in stimulating hands-on activities.

The workshops support STEM education with strong links to the Australian Curriculum, and provide students with an in-depth exposure to the innovation process.

Workshops include 3D design, building robots, building cranes and much more!

BOOK NOW!

phone 1800 889 995

email bookings@questacon.edu.au



www.questacon.edu.au



Australian Government
Department of Industry,
Innovation and Science

Questacon

The National Science and Technology Centre

PRINCIPAL PARTNER



The Ian Potter
Foundation

Questacon

**FREE FALL DOWN
A SIX METRE SLIDE**

**WRAP YOUR MIND AROUND
INTRIGUING QUESTIONS**

**PARTICIPATE IN AN
EXPLOSIVE SCIENCE SHOW**

Located in the Parliamentary Triangle, Questacon – The National Science and Technology Centre combines science and entertainment into an incredible experience for students of all ages!



For more information contact the bookings team on 02 6270 2893 or email group.bookings@questacon.edu.au

Questacon – The National Science and Technology Centre

King Edward Terrace, Canberra. Phone 02 6270 2800
Open 9 am–5 pm every day. Closed 25 December
Admission fees apply



www.questacon.edu.au



Australian Government
Department of Industry,
Innovation and Science

Questacon

The National Science and Technology Centre



THE SNOWY MOUNTAINS

SOUTHERN NSW

We offer Snowy Mountains Special Skiing Packages with lessons for primary & secondary students including:

- ▶ clothing
- ▶ ski equipment
- ▶ 2 hour group lift
- ▶ lesson tickets available at Thredbo and Perisher

TOURS INCLUDE:

- ▶ luxury seatbelt equipped coach travel
- ▶ entrance and attraction fees *(where possible)*
- ▶ accommodation of your choice
- ▶ meals (excludes breakfast and lunch on the first day and dinner on the last day)
- ▶ teachers travel free

The Snowy Mountains Scheme and the Snow Fields of NSW. More than just snow and skiing. It is history. It is forestry and industry. It is power and water.

If your student learning experience is just coach travel to the snowfields, then let Travelways plan it all. From accommodation, Kosciuszko National Park Entrance, Ski Tube and chairlift rides, quality clothing hire and first class ski equipment for students to try their first hand at skiing. As well as the other side to the Snowy Mountains, there is the Australian Institute of Sports High Altitude Training Centre, Kosciuszko National Park Education Centre, Snowy Hydro Information and Education Centre and many more great learning experiences to be discovered.

ACCOMMODATION SELECTION

- | | |
|-------------------------|----------------------------|
| 1 High Country Motel | 5 Snowview Units |
| 2 Marlborough Motor Inn | 6 Southern Cross Motor Inn |
| 3 San Michele Resort | 7 Thredbo YHA |
| 4 Snowgate Motel | |

VENUE SELECTION

- | | | |
|-------------------------------|---|---|
| 1 AIS heated water slide/pool | 7 Kosciuszko National Park Education Centre | 14 Snowy Mountains Authority Information Centre |
| 2 Berridale | 8 Mt Selwyn | 15 Snowy Mountains Regional Visitors Centre |
| 3 Chair Rides | 9 Murray 1 Power Station | 16 Snowy River Ag. Barn Fibre Centre |
| 4 Cooma | 10 Perisher Blue Ski Resort | 17 Thredbo Resort |
| 5 Eucumbene Trout Farm | 11 Perisher Ski Tube | 18 Tumut 2 and 3 Power Station |
| 6 Jindabyne | 12 Ski Lessons | 19 Yarrangobilly Caves |
| | 13 Snowy Hydro Information and Education Centre | |



ITINERARY	DAY ONE
5.45am	Coach arrives at school.
6.00am	Depart school for Canberra . Midway comfort break (at own expense).
10.30am	Electoral Education Centre Three part program – 1) The Theatre 'Democracy the Australian way' 2) The Dead Zone 'Discovering Electoral Activities Zone' 3) The Polling Place
12.00pm	Lunch – Students and teachers to provide their own packed lunch.
1.30pm	Australian War Memorial A visit to the War Memorial offers students many ways to come to understand and empathise with Australians who served and died during war. The galleries cover every major war in which Australian has been involved.
5.30pm	Arrive at overnight accommodation.
6.00pm	Dinner.
7.00pm	Depart accommodation for ski hire.
7.30pm	Ski Hire – Hire parka, pants, and walk boots.

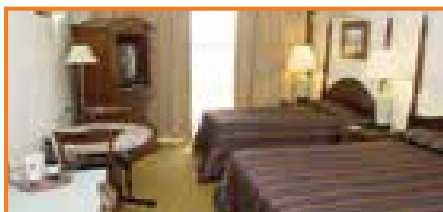
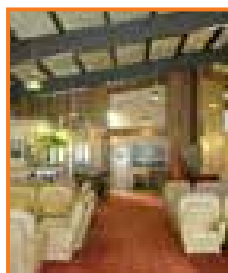
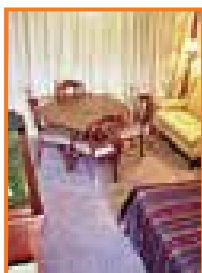
3 DAY CANBERRA - SNOWY MOUNTAINS ITINERARY

ITINERARY	DAY THREE
6.30am	Breakfast.
7.15am	Load luggage onto coach.
7.30am	Depart accommodation centre for Canberra .
9.30am	Parliament House Hospitality, House of Representatives and the Senate and Parliamentary Education Office.
12.30pm	Questacon Here you experience first hand their exciting 'hands-on' science exhibits. Lunch - packed lunch provided by accommodation centre.
2.30pm	Australian Institute of Sport See the fittest bodies in Australia at the Australian Institute of Sport. Experience the life of an elite athlete as you tour the international standard sports facility and students can test their skills at the interactive sports exhibition.
4.00pm	Depart Canberra for return journey to school. Mid way comfort break (at own expense).
8.30pm	Approximate arrival at school.

ITINERARY	DAY TWO
7.00am	Breakfast.
8.00am	Depart accommodation centre.
8.30am	Snowy Hydro Information and Education Centre Cooma 'Power of Water' Short Film
9.15am	Depart for Thredbo. Collect Kosciuszko National Park Entry and Thredbo Tickets.
11.00am	Arrive Thredbo Chairlift ride Fun in the snow Packed lunch provided by accommodation centre.
2.30pm	Thredbo AIS heated pool and waterslide
3.45pm	Depart Thredbo.
5.45pm	Ski hire – Return clothing hire.
6.15pm	Arrive at overnight accommodation.
6.45pm	Dinner. Night time activities.

Marlborough Motel

cooma, nsw



Quality accommodation in Cooma, NSW.

Sitting on the Monaro Highway, the Marlborough Motor Inn welcomes visitors with 60 well-appointed units and suites.

Specialising in quality accommodation for school groups and bus tours, the Marlborough Motor Inn can cater for all standards of accommodation. Whether you are seeking a winter time skiing experience or a relaxed summer vacation, the Marlborough Motor Inn is the ideal spot. The Marlborough is located on 3.5 acres of grounds and is within walking distance of the Snowy Hydro Information and Town Centre, shops and dining. This luxurious property is an ideal base for a ski excursion in winter or for discovering the Snowy Mountains at other times of the year. Priced to suit all budgets. Packages available.

AT A GLANCE

Max capacity: 216 students or 120 adults, bus tour groups

Room Type: Bunk, Queen

Breakfasts: Hot **Lunch:** Available **Dinner:** Included

Disabled facilities: Yes **Coach parking:** Yes

Facilities: Spa, Sauna, Swimming Pool (*Summer only*)



Marlborough Motel, 19 Monaro Hwy, Cooma, NSW 2630

P 02 6452 1133 | F 02 6452 4675 | info@marlboroughmotel.com | www.marlboroughmotel.com



THE SKI CO!

Ski & Snowboard Specialists

COOMA

SKI & CLOTHING HIRE FOR COACH GROUPS



Treat your students to a unique experience whilst on excursion to the National Capital and surrounding areas. A day trip to the Snowy Mountains could be, for some, their only visit to the snow in a lifetime. Giving your students the best possible experience is our priority, we have been looking after school groups for many years so you know you are in good hands.

WHY HIRE IN COOMA?

Due to extreme weather conditions in the Snowy Mountains it is advisable to outfit your group before arrival in the snow.

LOCATION

Pass by our door on your way to the snow. Great location next door to McDonalds in Cooma on your way to the snow—for your convenience you could have breakfast on the way or dinner on the return with the one stop.

PRICE

We offer very competitive group prices & packages, we can book your lift and lesson, chair lift rides, ski tube, Thredbo AIG and Park Entry which can all be paid for on the one invoice to us or through your agent.

CONVENIENCE

Coach Parking at the door. We have a separate group hire for fast efficient service offering 22 fitting rooms and plenty of room for your students, our hire has been designed to cater for 200 students at the same time, no more waiting on the coach or outside in the cold, there's just no waiting.....

QUALITY GUARANTEED

Equipment regularly serviced & clothing laundered after every use. The Ski Co offer warm water proof clothing and boots of the best quality and price. Our equipment is always current and well maintained. If on a rare occasion an exchange needs to be made on the mountain a full refund will be given.

EXPERIENCE

Our hire staff are qualified technicians. We have been catering for school students and social groups for over 20 years our friendly staff will make the pick up and return of snow equipment effortless for you, you can even enjoy a coupe while we look after your students.

F R E E C A L L
1800 686 125

T 6452 4131 F 6452 4002 32 BRADLEY ST, COOMA, NSW, 2630

R I G H T B E H I N D M C D O N A L D ' S I N C O O M A

skico@bigpond.net.au

www.skico.com.au

VENUE SELECTION

- 1 Abercrombie Caves
- 2 Australian Fossil and Mineral Museum
- 3 Bathurst Goldfields
- 4 Bathurst Historical Tour
- 5 Bathurst Observatory
- 6 Ben Chifley House
- 7 Blue Mountains Heritage Centre
- 8 Cowra Museum – War, Rail and Rural
- 9 Cowra Japanese Gardens
- 10 Cowra War Cemetery
- 11 Cowra Prisoner War Camp
- 12 Crystal Kingdom, Coonabarabran
- 13 CSIRO Telescope, Parkes
- 14 Dubbo Military Museum
- 15 Echo Point and The Three Sisters
- 16 Govetts Leap Lookout
- 17 Gulgong Pioneer Museum
- 18 Hartley Historic Site
- 19 Heritage Park
- 20 Hill End Holiday Ranch
- 21 History Hill
- 22 Jenolan Caves
- 23 Mount Tomah Botanic Gardens
- 24 Mt Piper Power Station
- 25 National Motor Racing Museum
- 26 Old Dubbo Goal
- 27 Scenic Rail and Skyway
- 28 Sliding Springs Observatory
- 29 Sky Watch Observatory, Coonabarabran
- 30 Warrumbungles Field Study Centre
- 31 Warrumbungles National Park
- 32 Wellington Caves
- 33 Wellington Phosphate Mine
- 34 Western Plains Zoo



CENTRAL WEST

BLUE MOUNTAINS, NSW

Discover our history and environment with a visit to the Blue Mountain Region, the perfect location for educational tours.

Students have the opportunity to follow the steps of Blaxland, Wentworth and Lawson, the first Europeans to cross the Blue Mountains. Visit the convict built Lennox Bridge at Lapstone and further west in Katoomba, view the famous Explorers' Marked Tree, now caged in and sheltered to protect the remains. Explore Katoomba's early beginnings at Scenic World, descend to a Rainforest boardwalk via the world's steepest incline railway.

A visit to the National Parks and Wildlife Services will help students gain a valuable understanding of the region's world heritage value and discover the unique flora, fauna, indigenous culture and geological history with a Discovery Park Ranger.

Continue your journey and experience into the natural wonders of the Jenolan Caves, the best known limestone caves in Australia, with underground rivers and cave formations that will amaze you. The caves present students with the wonderful opportunity to discover and experience the environment and the relationship between the above ground environment and the underground world.



2 DAY BLUE MOUNTAINS & JENOLAN CAVES ITINERARY

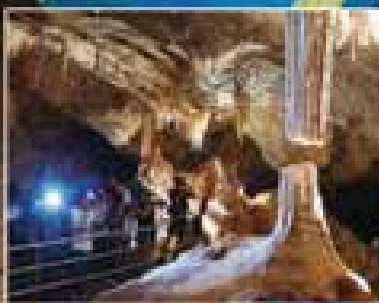
ITINERARY	DAY ONE
6.45am	Coach arrives at school.
7.00am	Depart school for the Blue Mountains .
8.45am	Echo Point and the Three Sisters . Morning Tea.
9.15am	Katoomba Scenic Railway – return journey. Built in 1878 to transport coal to the top of the escarpment this thrilling and unique ride descends 450 metres down the escarpment at a maximum gradient of 52 degrees and it holds the Guinness Book of Records certificate as the world’s steepest passenger carrying incline railway.
10.30am	Depart for Hartley .
11.15am	Hartley Historic Site Audiovisual – slide presentation on the crossing of the Blue Mountains and the history of the area. Court House Tour – the Court House was built in 1837 and is set as it was when operating. The tour includes the constable’s room, male & female cells, courtroom, magistrate’s & clerk’s office. The Farmers Inn – built in the 1840’s, the shop is set out as an old General Store and carries antique reproductions.
12.30pm	Lunch – Students provide their own packed lunch.
1.15pm	Depart for Jenolan Caves .
3.00pm	Arrive Jenolan Caves.
3.30pm	Jenolan Caves Tour Outstanding limestone caves with spectacular lighting, underground rivers and cave formations that will amaze you.
5.00pm	Jenolan Caves Gate House Students to provide own sleeping bags/linen and towel.
5.30pm	Dinner .

ITINERARY	DAY TWO
7.00am	Breakfast .
9.00am	Jenolan Caves Tour - another outstanding limestone cave.
1.00pm	Mt Piper Power Station Video and talk on the operations of the power station. Tour the plant then visit the ‘Energy Expo’ which has static and interactive displays. Lunch – packed lunch provided by accommodation centre.
2.00pm	Depart for journey to Govetts Leap .
3.30pm	Govetts Leap Lookout - Govetts Leap Lookout is a popular lookout and offers spectacular views over the Grose Valley and to Govetts Leap Falls.
4.15pm	Depart for return journey to school.
6.00pm	Approximate arrival at school.

ACCOMMODATION SELECTION

- 1 Bathurst Goldfields
- 2 Gold Panner Motor Inn
- 3 Heritage Park
- 4 Jenolan Caves Gate House

nature's classroom



**There's always something new in the world's oldest caves
... explore, learn, and be amazed.**

Jenolan boasts Australia's most spectacular cave system. In the World Heritage listed Karst Conservation Reserve, experience rare wildlife, ecosystems and geological formations wilder than the imagination – great for a range of Key Learning Areas, from K-12.

- mind-boggling show cave tours with nationally accredited guides
- new adventure programs for teamwork, fitness and self-confidence
- bush navigation and fascinating karst walks
- relevant and handy study guides
- completed risk management paperwork for your convenience
- healthy meals and a range of accommodation
- economical packages



BATHURST GOLDFIELDS

CENTRAL TABLELANDS, NSW

Experience life as it used to be in the Australian Goldrush days. You can study the skies and the land and gain an insight on the farm, or learn to throw a boomerang.

1 DAY EXPERIENCE

Allows students to learn about the Discovery of Gold with 'hands-on' experience.

- ▶ Gold Tour
- ▶ 'Hands-on' operating whip
- ▶ 'Hands-on' operating California bucket pump
- ▶ Gold panning demonstration
- ▶ 'Hands-on' operating whim
- ▶ Mine
- ▶ Steam shed and operating steam engine
- ▶ Operating stamper battery
- ▶ Gold retorting
- ▶ Blacksmithing demonstration
- ▶ Operating water wheel
- ▶ Chinese protectorate
- ▶ Life in the Goldfields
- ▶ Making and erecting mud bricks
- ▶ Erecting rammed Earth buildings
- ▶ Bush cooking
- ▶ Bush games
- ▶ 'Hands-on' gold cradling and panning

2 DAY EXPERIENCE

Experience life as it used to be in the Australian Goldrush at Bathurst Goldfields.

- ▶ Gold Tour
- ▶ 'Hands-on' operating whip
- ▶ 'Hands-on' operating California bucket pump
- ▶ Gold panning demonstration
- ▶ 'Hands-on' operating whim
- ▶ Mine
- ▶ Steam shed and operating steam engines
- ▶ Operating stamper battery
- ▶ Gold retorting
- ▶ Blacksmithing demonstration
- ▶ Operating water wheel
- ▶ Chinese protectorate
- ▶ Life in the Goldfields
- ▶ Making and erecting mud bricks
- ▶ Erecting rammed Earth buildings
- ▶ Bush cooking
- ▶ Bush games
- ▶ 'Hands-on' gold cradling and panning

VENUE SELECTIONS

- 1 Australian Fossil & Mineral Museum – home of the Somerville Collection
- 2 Bathurst Goldfields
- 3 Bathurst & District Historical Museum
- 4 Bathurst Observatory
- 5 Ben Chifley House
- 6 Heritage Park
- 7 Historical Bathurst Tour
- 8 Hill End Holiday Ranch
- 9 National Motor Racing Museum

2 DAY BATHURST ITINERARY

ITINERARY	DAY ONE
7.00am	Coach arrives at school.
7.15am	Coach departs school.
9.45am	Echo Point and the Three Sisters. Morning Tea.
10.30pm	Depart Katoomba .
11.45am	Jenolan Caves See outstanding limestone caves with spectacular lighting, underground rivers and cave formations that will amaze you.
1.30pm	Lunch - Students and teachers supply own packed lunch.
2.00pm	Depart for Bathurst .
3.15pm	Heritage Park See and hear the story of some of the leading sheep and cattle breeds, watch as they parade before you and move to their place on the stage. You can join in and milk a cow, watch a sheep being shorn and see the wool being classed.
5.00pm	Arrive overnight accommodation.
6.00pm	Dinner .
7.30pm	Evening activity - Bush Dance, Campfire and Observatory.

ITINERARY	DAY TWO
7.30am	Breakfast
9.00am	Gold Tour Attractions and hands on activities include operating whip, operating California bucket pump, gold panning demonstration, operating whim, mine tour, steam shed and operating steam engines, operating stamper batter, blacksmithing demonstration, operating water wheel and operating water wheel.
12.00pm	Lunch - Sausage Sizzle.
12.30pm	Life in the Goldfields Includes making mud bricks, erecting mud brick and rammed earth buildings, bush cooking, bush games and cradling gold.
2.00pm	Gold Panning 'Hands-on' Gold Panning
2.30pm	Depart Bathurst Goldfields for return journey.
	Short stop at McDonalds Blaxland - at own expense.
7.00pm	Approximate arrival at school.

Bathurst Goldfields

LEARN • PLAY • STAY

EDUCATION CENTRE

Step Back in Time



- **Educational Tours**
- **Cross Curricular Programs that meet the National Curriculum with all resources and materials provided**
- **Motel and Dormitory Accommodation**
- **Expert Tour Guides**

Step back in time with a visit to historic Bathurst NSW and an educational stay at Mount Panorama Accommodation, Education and Events.

Our brand new cross curricular programs have been designed to meet the learning outcomes of the new Australian Curriculum and cover History, Geography, Science and Maths, incorporating the Aboriginal heritage and history of the local Wiradjuri people. With all materials and resources provided, new tours also take advantage of the rich history of Bathurst, Australia's oldest inland settlement, with exciting tours of key local sites. Motel and dormitory accommodation are accompanied by nutritional meals that also cater for dietary requirements. Our expert tour guides will make it a trip to remember.
(Formerly Bathurst Goldfield's)

**428 Conrod Straight,
Mount Panorama
Bathurst NSW 2795**

**Tel: 02 6332 2022
Fax: 02 6332 3441**

**Email: info@bathurstgoldfields.com.au
www.bathurstgoldfields.com.au**



3 DAY BATHURST ITINERARY

ITINERARY	DAY ONE
7.15am	Coach arrives at school.
7.30am	Depart school for Bathurst . Morning tea stop at Three sisters/ Echo Point . Students and teachers to provide own morning tea.
9.30am	Katoomba Scenic Railway Built in 1878 to transport coal to the top of the escarpment, this thrilling and unique ride descends down 450 metres and holds the Guineas Book of Records Certificate as The World's steepest passenger carrying incline railway Lunch – Students and teachers to provide own packed lunch.
12.00pm	Depart for return journey to Bathurst.
2.00pm	Heritage Park See the Famous Sheep & Cattle Drome Show where some of our leading breeds of the Central Tablelands are on display.
3.30pm	Heritage Park Animal Nursery Take a wander through the Heritage Park animal nursery and see how they care for the animals of all ages.
5.00pm	Arrive Bathurst Goldfields Students to provide own sleeping bag and towels.
6.00pm	Dinner .
7.30pm	Evening Activity at Bathurst Goldfields.

ITINERARY	DAY TWO
7.30am	Breakfast .
9.00am	Bathurst Goldfields - Gold Tour - Tour the gold workings on the site of Mt Panorama. On a guided tour, you will see a blacksmithing demonstration, a working steam operated Stamper Battery, the indoor Geology Museum and have explained the workings of a gold mine.
11.30am	Sausage Sizzle Lunch – provided by accommodation centre.

12.00pm	Bathurst Goldfields - Life in the Goldfields You will experience 'A Life in the Goldfields', a program which includes; making and erecting mud bricks and rammed earth buildings, bush cooking, bush games and experience life in a wattle and daub hut.
2.30pm	Depart Bathurst Goldfields .
3.00pm	NSW Mineral Museum – The Somerville Collection The Somerville Collection gives students access to the finest and rarest examples of minerals and fossils in the world. Highlights from the mineral collection include crystals from Australian mine sites, the world's largest rhodonite gem crystals, 2,000 million years old garnets, rainbow-coloured fluorites from China. Features of the fossil collection include Australia's only complete T-Rex skeleton, Australia's largest collection of fossil dinosaur eggs, some of the oldest fossils of early forms of life and a large collection of Australia's unique opalised fossils.
5.30pm	Overnight accommodation.
6.00pm	Dinner
7.30pm	Evening activity at Bathurst Goldfields.

ITINERARY	DAY THREE
7.30am	Breakfast .
8.30am	Depart accommodation centre.
10.00am	Jenolan Caves Tour Explore the amazing caves at Jenolan and discover all the different and beautiful formations that have come to form over the years. Lunch – packed lunch provided by accommodation centre.
12.30pm	Depart for return journey to school. Midway comfort break – at own expense.
4.00pm	Approximate arrival at school.



NORTH COAST

CENTRAL COAST TO COFFS HARBOUR

VENUE SELECTIONS

- 1 Australian Reptile Park
- 2 Dawson Scenic Cruises
- 3 Environmental Education Centre, Morpeth
- 4 Fighter World, Williamtown
- 5 Australian Rainforest Sanctuary, Ourimbah
- 6 Historic Morpeth
- 7 Hunter Regional Botanic Gardens
- 8 Hunter Valley Wineries
- 9 Koolang Astronomical Observatory, Bucketty
- 10 Kooloonbung Creek Nature Park, Port Macquarie
- 11 Maitland Gaol
- 12 Morpeth Courthouse Museum
- 13 Nelson Bay Dolphin Watch
- 14 Newcastle Guided Tram Tour
- 15 Newcastle Maritime Museum
- 16 Newcastle Regional Museum
- 17 Sea Acres Rainforest Centre, Port Macquarie
- 18 StarShip Cruises
- 19 The Wetlands Centre
- 20 Tocal Historic Homestead
- 21 Vales Point Power Station, South Newcastle



SOUTH COAST

BERRY TO EDEN, NSW

VENUE SELECTIONS

- 1 Australia's Industry World, Wollongong
- 2 Bradman Museum, Bowral
- 3 Australian Genealogical Education Centre, Kiama
- 4 Old Mogo Town and Mogo Zoo
- 5 Umbarra Aboriginal Cultural Centre, Bermagui
- 6 Minnamurra Rainforest
- 7 Jamberoo Recreation Park

1 DAY SOUTH COAST ITINERARY

ITINERARY	DAY ONE
7.00am	Depart school.
10.30am	Arrive at Jervis Bay .
11.00am	Dolphin Watch Cruise Explore and discover the hidden secrets of Jervis Bay's White sandy beaches, majestic sandstone cliffs, mysterious sea caves and of course the abundance of wildlife including whales and dolphins, seal and penguins, sea birds and much more!
12.30pm	Lunch - students and teachers to supply own packed lunch.

2.30pm	Bishops Big Foot Adventures With easy access to the amazing Monster Bus this 1 hour ride appeals to people of all ages and abilities. Be amazed and exhilarated as you climb the steep grade to the summit of Mt Coolangatta near Shoalhaven Heads on the NSW South Coast! Hear the story of the Coolangatta Estate from convict-built establishment to present day Award Winning Wines.
4.00pm	Depart for journey back to school.
7.30pm	Approximate arrival at school.

3 DAY SOUTH COAST ITINERARY THE ORIGINAL GOLD RUSH COLONY

ITINERARY	DAY ONE
8.15am	Coach arrives at school.
8.30am	Depart school for the South Coast .
10.30am	<p>Minnamurra Rainforest Centre (Budderoo National Park) The rainforest is particularly special because of the diversity of rainforest types, the range of ferns and wildlife that exists within a relatively small area. Today students will enjoy a PowerPoint presentation/video and guided tour of the rainforest loop. Presentation and Guided Walk (2 hour duration).</p> <p>Lunch at Minnamurra – students and teachers provide own packed lunch. Continuing our journey along the coast road travelling through Nowra, Ulladulla and Batemans Bay where we will have a quick stop for afternoon tea. Students and teachers provide own afternoon tea.</p>
3.30pm	Depart Batemans Bay.
4.00pm	<p>The Original Gold Rush Colony Walk into a time warp and experience the history and living conditions of Australia's 1850's gold rush days on the NSW South Coast. Explore the mine tunnels, historical buildings and antique machinery. On arrival, students will settle into their accommodation.</p>
5.00pm	Time to play traditional games – Dominoes, Hop Scotch, Housey Housey, Tag, Skipping, Marbles, Coits, rainy day games & Tug of War. These were the games played by children in the 1850's.
6.00pm	Dinner.
7.00pm	Koori Culture Stories – beside the eerie light of the camp fire talking about Aboriginal Culture past and present.
8.00pm	Free time and bed time.

ITINERARY	DAY TWO
8.00am	Breakfast.
9.00am	Gold History Tour and Bush Ranger re-enactment.
12.00pm	Lunch.
1.00pm	Life on the Gold Fields – Imagine what it might have been like to live in the Gold Rush days of Australia. Explore going to school, making a traditional toy and the diggers staple food, damper.
3.00pm	Free time.
3.30pm	Bush Dance preparation.
5.00pm	Free time.
7.00pm	Traditional Bush Dance.
9.00pm	Free Time and bed time.

ITINERARY	DAY THREE
8.00am	Breakfast.
9.00am	Depart The Original Gold Rush Colony.
9.15am	Mogo Zoo – Meet the animals of Mogo Zoo with over 100 animals of more than 35 rare and exotic species.
11.00am	Depart Mogo.
1.15pm	Stopping at Kiama to view the blowhole and lunch.
2.30pm	Wollongong Science Centre The Wollongong Science Centre is not just an educational facility. Their favourite words are 'hands-on' with over 100 interactive exhibits relating to various scientific themes (1½ hour duration).
4.00pm	Depart Wollongong for our return journey home.
6.00pm	Approximate arrival at school.



DISCOVER SYDNEY

METROPOLITAN SYDNEY, NSW

Sydney attractions provide a great fun day out with a wide range of curriculum based educational programs.

Be captivated by Sydney's spectacular sites around Sydney Harbour such as the Sydney Harbour Bridge and Sydney Opera House, Taronga Zoo, Sydney Tower, Sydney Aquarium, Sydney's Darling Harbour and the Rocks area where The Rocks Walking Tour brings alive the story of the early convict settlement while entertaining students with stories of Rascals, Rats and Restoration.

Circular Quay is the water gateway to Sydney and is close to The Rocks, the Opera House and the Royal Botanic Gardens. Take your students on a Sydney Ferry or aboard a floating classroom on a Sydney harbour cruise and discover the heritage, industry and development of Sydney.

Accommodation is available in the inner city area with night activities within walking distance such as the George Street cinemas, the Imax Theatre in Darling Harbour and Sydney Tower.

SYDNEY ATTRACTIONS

- 1 Art Gallery of NSW
- 2 Chinese Friendship Gardens
- 3 CSIRO Science Education Centre
- 4 Fairfield City Farm
- 5 Featherdale Farm
- 6 Government House
- 7 Hyde Park Barracks
- 8 IMAX Theatre Darling Harbour
- 9 Koala Park
- 10 Luna Park
- 11 National Maritime Museum
- 12 Maritime Museum
- 13 Museum of Sydney
- 14 Ocean World Manly
- 15 Parliament House
- 16 Powerhouse Museum
- 17 Royal Botanic Gardens
- 18 Sydney Aquarium
- 19 Sydney Harbour Cruise
- 20 Sydney Observatory
- 21 Sydney Olympic Park
- 22 Sydney Opera House
- 23 Sydney Wildlife World
- 24 Sydney Tower and OZ Trek
- 25 The Rocks Walking Tour



3 DAY SYDNEY ITINERARY

ITINERARY DAY ONE

7.45am	Coach arrives at school.
8.00am	Depart for Sydney . Midway comfort break (at own expense).
12.30pm	Arrive at Sydney, Darling Harbour. Darling Harbour Playground. Lunch – Students and teachers to provide their own packed lunch.
2.00pm - 5.00pm	Powerhouse Museum - Physical Phenomena. Spark your group's curiosity with an interactive exploration into static and current electricity. Witness some home-made lightning using the Van de Graff Electro Static Generator and learn about conductors and insulators with the Wimshurst machine. Prepare to be shocked and amazed at the illuminating power of electricity! Sydney Highlights Tour.
5.30pm	Arrive at overnight accommodation.
6.30pm	Dinner.

3.00pm - 4.30pm	Madame Tussauds - Students will come face-to-face with the world's most iconic personalities, meet historical greats, give a speech alongside Julia Gillard, meet Olympic sports heroes; Cathy Freeman and Dawn Fraser and test their IQ against Einstein.
5.00pm	Arrive at overnight accommodation.
6.30pm	Dinner.
7.30pm	Depart for evening activity.
8.15pm - 10.00pm	Sydney Observatory - A night visit provides a unique opportunity for students to learn about astronomy and space exploration. Students can view the Moon, the planets, double stars, star clusters and nebulae using the observatory's large telescopes.

ITINERARY DAY TWO

7.00am	Breakfast.
8.15am	Depart accommodation.
9.00am - 12.00pm	Sydney Aquarium - Venture through 14 themed zones including a new Shark Walk, a tropical Bay of Rays, an interactive Discovery Rockpool, Mangrove Swamps, a shipwreck and Shark Valley! Lunch - supplied by accommodation.
1.00pm - 2.30pm	Wild Life Sydney Zoo - Walk through iconic Aussie habitats and encounter some of the most loved and feared animals that call Australia home. Meet Rex, the huge 5 metre crocodile, see creatures of the night in the Nightfall habitat, and cuddle up to koalas.

ITINERARY DAY THREE

7.00am	Breakfast.
8.30am	Depart accommodation.
9.00am - 11.00am	The Rocks Walking Tour. Arrival of the First Fleet (with costumes). - Students explore the story of the British Colonisation and its impacts on the Eora people through the use of A3 images and the narrative skills of tour guides.
11.45am - 12.45pm	IMAX Theatre - 3D movie. 45 minutes. Lunch - supplied by accommodation.
1.30pm	Depart Sydney. Midway comfort break (at own expense).
6.30pm	Approximate arrival at school.

QUOTATION REQUEST FORM

Simply copy this form, fill in your details and fax to us at Travelways on (02) 9632 4477.

1 Contact Details:

Name of school:
 Address:
 Contact name:
 Email address:
 Phone number: Fax number:

2 Numbers in Group:

Number of students: Grade of students:
 Number of teachers: Number of parents:
 Destination/s: Number of days:

3 Preferred Accommodation Centres:

1st Choice:
 2nd Choice:

4 Attractions you would like to visit:

1. 8.
 2. 9.
 3. 10.
 4. 11.
 5. 12.
 6. 13.
 7. 14.

5 Evening activities:

1. 3.
 2. 4.

6 Preferred dates:

1st Choice: Departure Date: / / 20 Return Date: / / 20
 2nd Choice: Departure Date: / / 20 Return Date: / / 20
 3rd Choice: Departure Date: / / 20 Return Date: / / 20



...MORE THAN "Just another Coach Company"

Quotation/ Booking Request

**Please complete the following details and return via:
fax on (02) 9632 4477 or email to quotes@hopkinsons.com.au**

Date: ____ / ____ / ____

I would like to make a booking

I would like to receive a quotation

Group name: _____

Contact name: _____

Contact No: _____ (landline) _____ (mobile)

Email address: _____

Departure date: ____ / ____ / ____

Departure time: ____ : ____ AM / PM

Pick up address: _____

Destination - including address: _____

Return date: ____ / ____ / ____

Return time: ____ : ____ AM / PM

Total no of passengers: _____ Teachers: _____ Students: _____

19-54 seat coach

66-71 seat coach

45-50 seat bus

11 seat mini bus

luggage trailer

Seatbelts required

Seatbelts not required

Wheelchair accessible

Additional information: _____

Contact our charters team any time for an obligation free quote.



To submit your request,
email quotes@hopkinsons.com.au
or fax (02) 9632 4402

For more information
call (02) 9632 3344 or visit
www.hopkinsons.com.au

Hopkinsons

...MORE THAN 'Just another Coach Company'

Travelways

A U S T R A L I A
PROFESSIONAL STUDENT LEARNING EXPERIENCE COORDINATORS

CHOOSE FROM 150+ DESTINATIONS AND ACCOMMODATION VENUES

ACROSS CANBERRA AND GREATER NEW SOUTH WALES

SELECT FROM A RANGE OF SET TRANSPORT AND ATTRACTIONS PACKAGES OR CREATE YOUR OWN CUSTOMISED ITINERARIES TO SUIT YOUR GROUPS NEEDS. TRAVELWAYS ARE THE EXCURSION

PLANNING SPECIALISTS

PROVIDING HANDS-ON EDUCATIONAL OPPORTUNITIES FOR

SCHOOL CHILDREN AGED KINGERDATION TO YEAR 12

IN THE COMFORT OF LUXURY COACHES

Contact us today to receive an obligation free quotation
or to enquire about our transport and attraction packages.

CONTACT US:

CALL US ON (02) 9632 5200 **FAX TO** (02) 9632 4477

EMAIL TO info@travelwaysaustralia.com.au

WWW.TRAVELWAYS AUSTRALIA.COM.AU